



Welcome to Steinmeyer – Your reliable partner for ball screws

Steinmeyer Ball Screws are made for:

- Flight Control Actuators for fixed wing, Rotary and UAV aircraft
- EBA – Electrical Brake Actuators
- Landing Gear Systems
- Utility Actuators (internal and external aircraft)

Key elements of our aerospace group

- Maximized safety, redundancy, dual load paths and cost effectiveness
- Advanced materials selection (Stainless Steels AMS5898/Cronidur® 30)
- Full product/materials/process traceability
- All special processes available from NADCAP certified sources

Reliable and individual counseling

- 3D CAD data exchange in all commonly used file formats
- FEM, FMEA based on 3D Solidworks models
- Advanced 3D ball, ball path and deflector analysis (proprietary)
- FAIR, ATP/ATR and other reports as a standard



Contact:

Phone **+49 (0) 7431 1288 - 0**
E-Mail aerospace@steinmeyer.com

www.steinmeyer.com

August Steinmeyer GmbH & Co. KG

Riedstraße 7
72458 Albstadt
Germany

Phone +49 (0) 7431 1288 - 0
Fax +49 (0) 7431 1288 - 89

E-mail info@steinmeyer.com
Internet www.steinmeyer.com

Steinmeyer, Inc.

14 Henshaw Street
Woburn, MA 01801
United States

Phone +1 781 273 - 6220

E-Mail infoUSA@steinmeyer.com
Internet www.steinmeyer.com



Aerospace | EN-001:2019-06 | We reserve the right to make technical changes without prior notice. | Typing and printing errors reserved.



Steinmeyer Ball Screws for aerospace applications

Welcome to where precision is

History

Production of ball screws since the 60's

The Steinmeyer company was founded by Mr. August Steinmeyer in 1920. One year later, in 1921, he decided to specialize in micrometers, which has to become the product range for which the small company was soon to be recognized in the domestic market and abroad. When the founder suddenly passed away in 1940, Mr. Erwin Beck assumed leadership of the company, and subsequently acquired it in 1950. The house with its attached work shop, built by the founder in 1937, became the origin of a factory plant which occupies some 8 acres of land today. The original house still exists,

but has since been converted into office and meeting space. Beginning in the late 1960's, ball screws have been manufactured at the Albstadt factory.

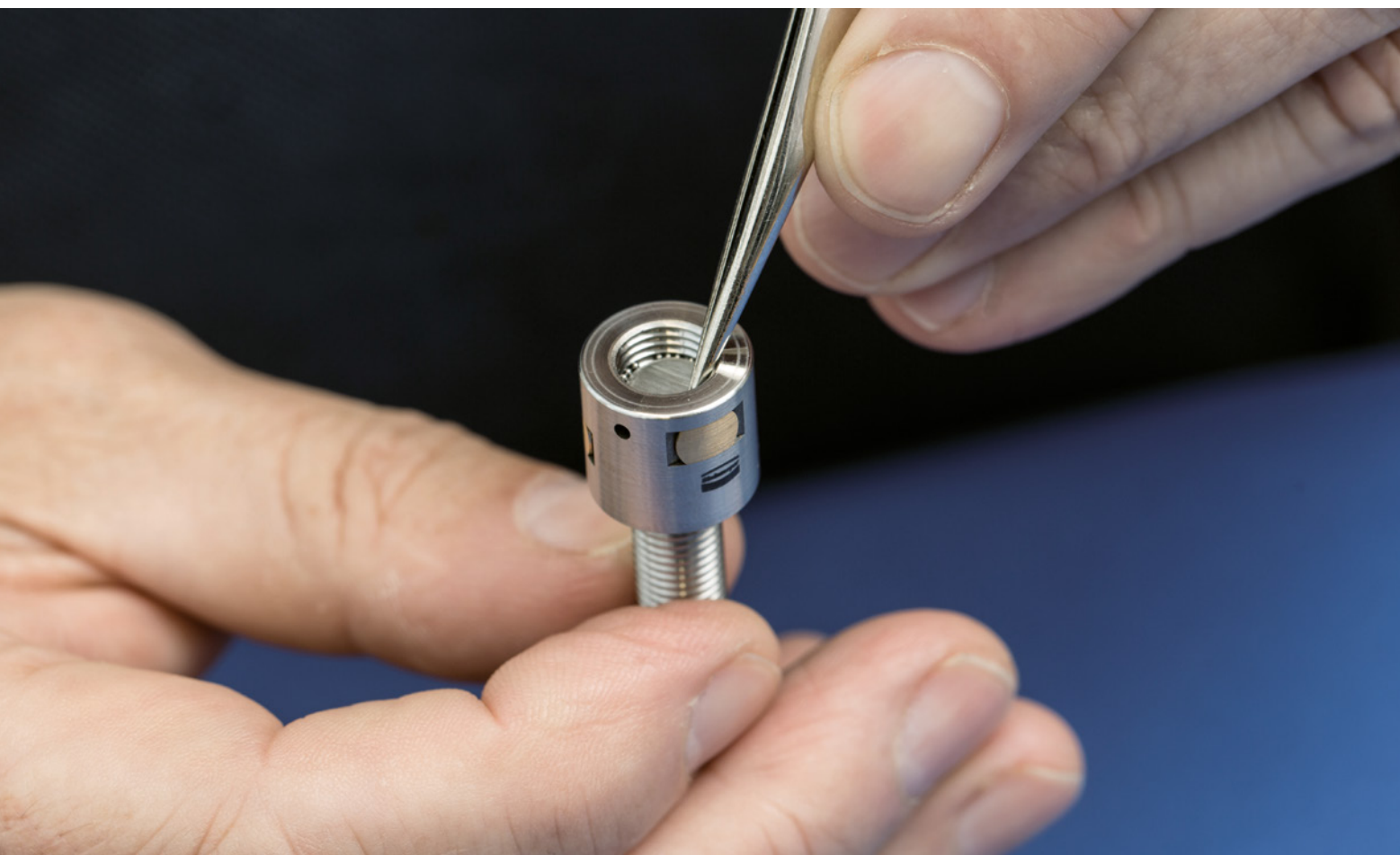
About 10 years later, this new product line outgrew the legacy micrometer manufacturing, and the organization and production facility had to be tailored towards the new product line. The traditional micrometer line, which still stands for precision and reliability of Steinmeyer's products, is now manufactured at the FMS Suhl plant in Thuringia, an affiliated enterprise in the Steinmeyer group.

Our product range

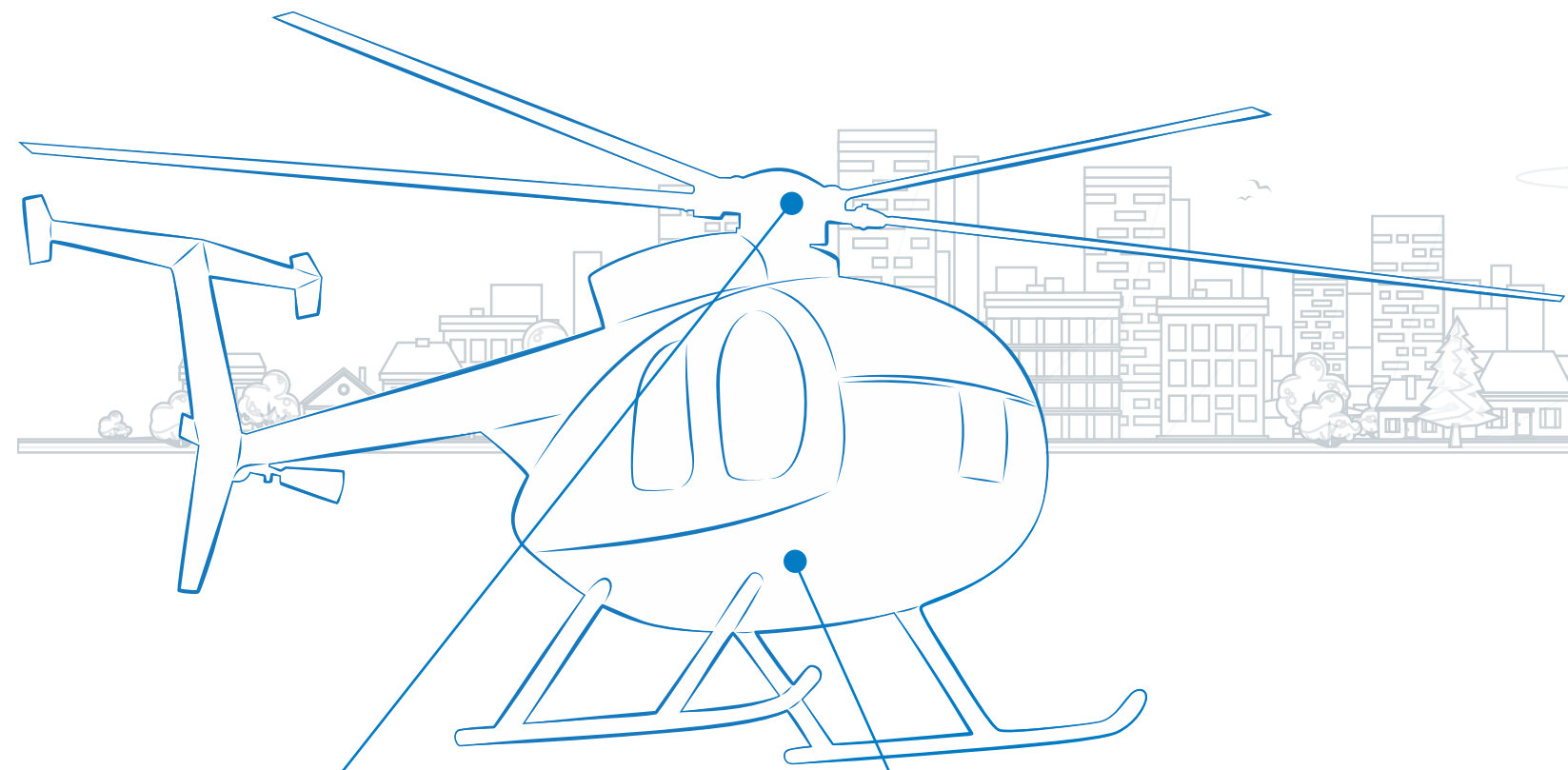
- Miniature Ball Screws 3 - 16 mm
- Large Ball Screws 16 - 125 mm
- Ultra Thrust Ball Screws 32 - 160 mm
- Aerospace Ball Screws
- Rotating Nut Ball Screws
- Precision Lead Screws

With more than 450 employees, Steinmeyer is the leading competence center in Europe in the fully integrated manufacturing of ball screws.

The production plant in Albstadt



Ball Screws for electromechanical actuators



Ball Screw for a backup system in a helicopter

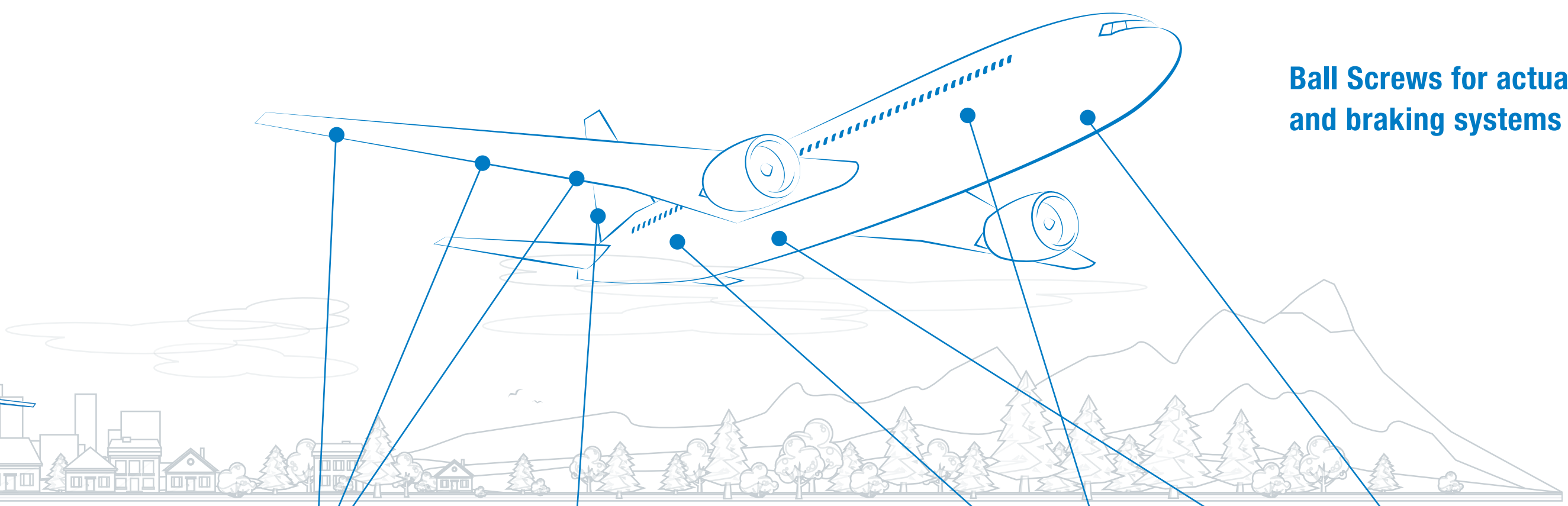
- Hollow-bored light weight design
- Extremely thin
- Dry lubrication



Ball Screw for an electric brake actuator of a helicopter

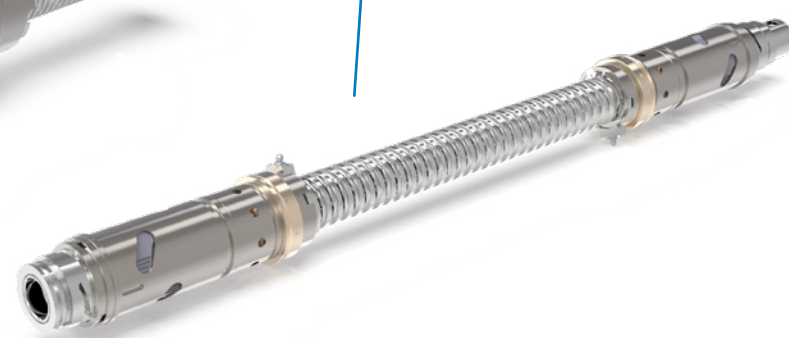
- Extremely light weight and compact design
- Spur gear and internal gearing integrated
- Mechanical end stops integrated

Ball Screws for actuators and braking systems



Ball Screw for flight controls in commercial and military aircraft

- Low weight and compact design with very high load/size ratio
- Integrated gimbal interface and spline interface
- Integrated non-jamming end stops
- Integrated scrapers and wipers for environmental resistance



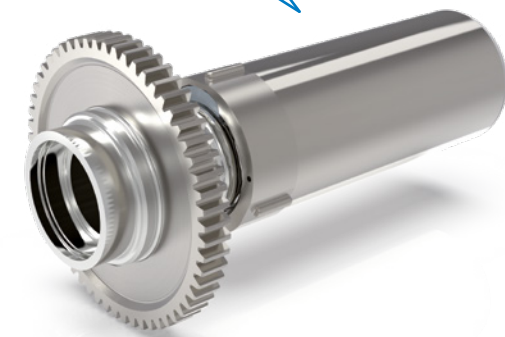
Ball Screw for flight controls in a commercial regional jet

- Highly reliable design with failure-mode detection
- Secondary Load Path for each ball nut and the ball screw
- Integrated non-jamming end stops
- Integrated scrapers and wipers for environmental resistance



Ball Screw for a ram door of an air conditioning system

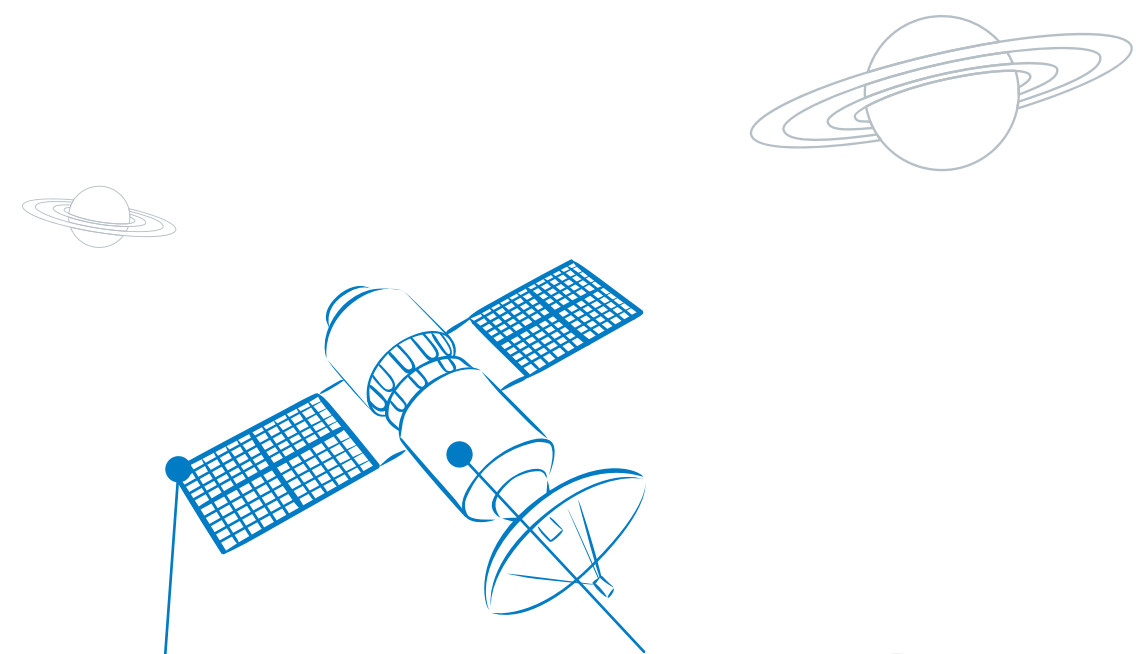
- Industry-oriented design for price optimization
- Poka-yoke means for secure top level assembly
- Integrated non-jamming end stops
- Integrated scrapers and wipers for environmental resistance



Ball Screw for an electric brake actuator of a medium-range jet

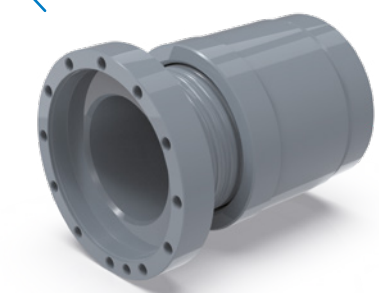
- Very high load/size ratio
- Integrated spur gear
- Hollow-bored

Ball Screws for space and unmanned air vehicles



Ball Screw for a communication system in a nano-satellite

- Light weight and compact design
- Special grease for space application



Ball Screw for a motor-driven valve in a HLV (heavy-lift launch vehicle)

- Special material for space application
- Dry lubricant
- Application specific integrated design
- Hollow-bored

Contact:
 Phone +49 (0) 7431 1288-0
 E-Mail aerospace@steinmeyer.com
 www.steinmeyer.com